

PLDRO-13215-13-100-E

13.215 GHz PLDRO , 13 dBm, External reference

电气参数 Electrical Characteristics:

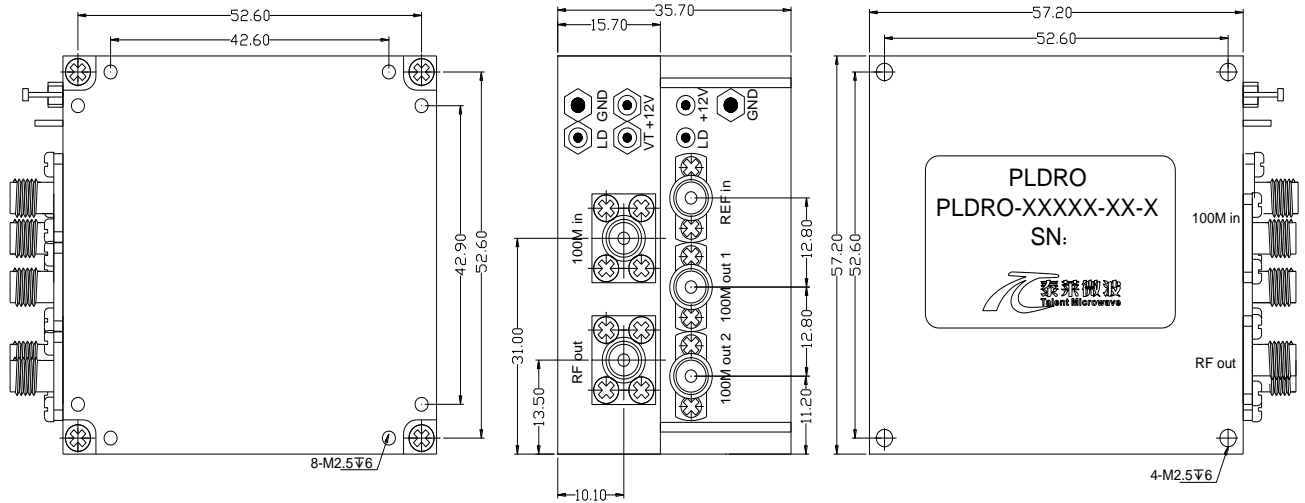
参数Parameter	Min	Typ	Max	指标 Value
输出频率 Output Frequency		13.215		GHz
输出功率 Output Power	13	17.7		dBm
参考信号 Reference	External			
参考频率 Reference Frequency		100		MHz
参考功率 Reference Power	0		+3	dBm
频率稳定度 Frequency stability	Same as input			ppm
相位噪声 Phase noise		-90	-88	dBc/Hz@100Hz
		-112	-100	dBc/Hz@1KHz
		-116	-108	dBc/Hz@10KHz
		-118	-113	dBc/Hz@100KHz
		-120	-113	dBc/Hz@300KHz
		-129	-120	dBc/Hz@1MHz
		-162	-135	dBc/Hz@10MHz
杂散抑制 Spurious		-73	-70	dBc
谐波抑制 Harmonics		-30	-20	dBc
电源电压 DC Voltage		12		V
工作电流 DC Current		340	550	mA
锁相指示 Phase-lock indicator	TTL High			

环境和物理特性 Environmental And Physical Characteristics:

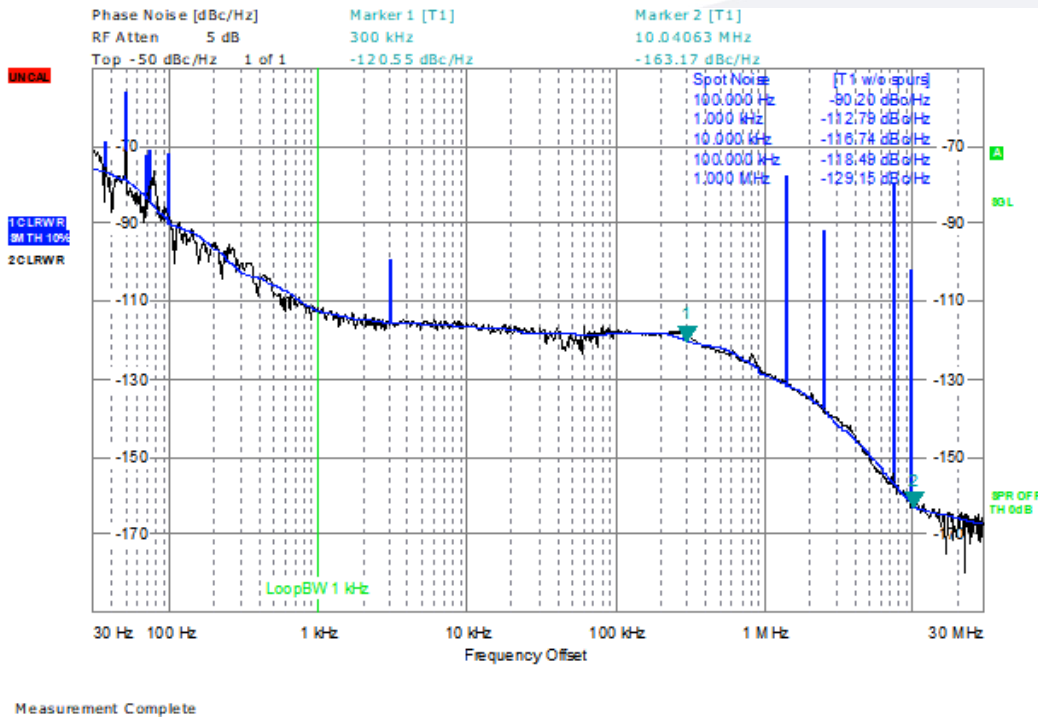
参数Parameter	指标 Value
操作温度 Operating Temperature	-40°C to +70°C
存储温度 Storage temperature	-45°C to +75°C
震动 Vibration (operating)	10G RMS, 20-2000HZ
冲击 Shock (non operating)	50G, 1/2Sine, 12msec
射频接口 Connector Type	SMA Female
直接接口 DC Connector	PIN
重量 Weight	190g Max

外形尺寸 Outline Drawing:

Unit: mm



典型相位噪声曲线 Typical Phase noise Performance Data:



订货信息 Ordering Information:

标准型号 Part Number	描述 Description	版本号 Revision
PLDRO-13215-13-100-E	13.215 GHz PLDRO , 13 dBm, External reference	Rev.1.1