

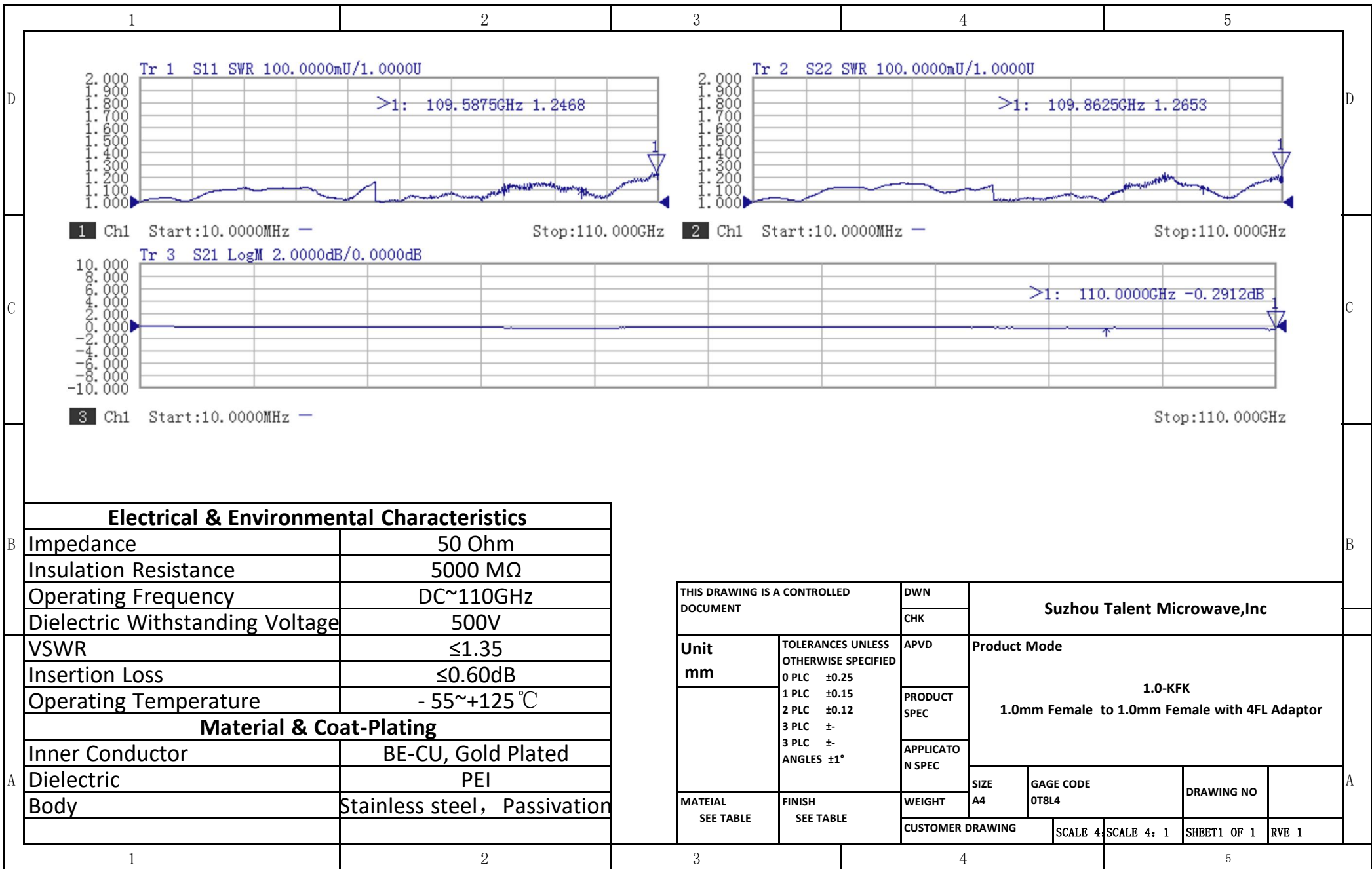
Electrical & Environmental Characteristics

Impedance	50 Ohm
Insulation Resistance	5000 MΩ
Operating Frequency	DC~110GHz
Dielectric Withstanding Voltage	500V
VSWR	≤1.35
Insertion Loss	≤0.60dB
Operating Temperature	- 55~+125 °C

Material & Coat-Plating

Inner Conductor	BE-CU, Gold Plated
Dielectric	PEI
Body	Stainless steel, Passivation

THIS DRAWING IS A CONTROLLED DOCUMENT		DWN	Suzhou Talent Microwave, Inc			
		CHK				
Unit mm	TOLERANCES UNLESS OTHERWISE SPECIFIED 0 PLC ±0.25 1 PLC ±0.15 2 PLC ±0.12 3 PLC ± ANGLES ±1°	APVD	Product Mode 1.0-KFK 1.0mm Female to 1.0mm Female with 4FL Adaptor			
		PRODUCT SPEC				
		APPLICATION SPEC				
MATERIAL SEE TABLE	FINISH SEE TABLE	WEIGHT	SIZE A4	GAGE CODE 0T8L4	DRAWING NO	
CUSTOMER DRAWING			SCALE 4	SCALE 4: 1	SHEET1 OF 1	RVE 1



Electrical & Environmental Characteristics	
Impedance	50 Ohm
Insulation Resistance	5000 MΩ
Operating Frequency	DC~110GHz
Dielectric Withstanding Voltage	500V
VSWR	≤1.35
Insertion Loss	≤0.60dB
Operating Temperature	- 55~+125 °C
Material & Coat-Plating	
Inner Conductor	BE-CU, Gold Plated
Dielectric	PEI
Body	Stainless steel, Passivation

THIS DRAWING IS A CONTROLLED DOCUMENT		DWN	Suzhou Talent Microwave, Inc			
		CHK				
Unit mm	TOLERANCES UNLESS OTHERWISE SPECIFIED 0 PLC ±0.25 1 PLC ±0.15 2 PLC ±0.12 3 PLC ± ANGLES ±1°	APVD	Product Mode 1.0-KFK 1.0mm Female to 1.0mm Female with 4FL Adaptor			
		PRODUCT SPEC				
		APPLICATION SPEC				
MATERIAL SEE TABLE	FINISH SEE TABLE	WEIGHT	SIZE A4	GAGE CODE 0T8L4	DRAWING NO	
		CUSTOMER DRAWING	SCALE 4	SCALE 4: 1	SHEET 1 OF 1	RVE 1