

Part No.: TC-20180-20S

20dB Directional Coupler SMA- Female 50Ω 2-18GHz

电气特性 Electrical:

工作频率 Frequency Range: 2000-18000MHz
 耦合度 Coupling: $20 \pm 1.0\text{dB}$
 插入损耗 Insertion Loss: $\leq 1.0\text{dB}$
 驻波 VSWR: $\leq 1.6:1$
 方向性 Directivity: $\geq 12\text{dB}$
 耐功率 Power Handling: 30Watt
 阻抗 Impedance: 50Ω

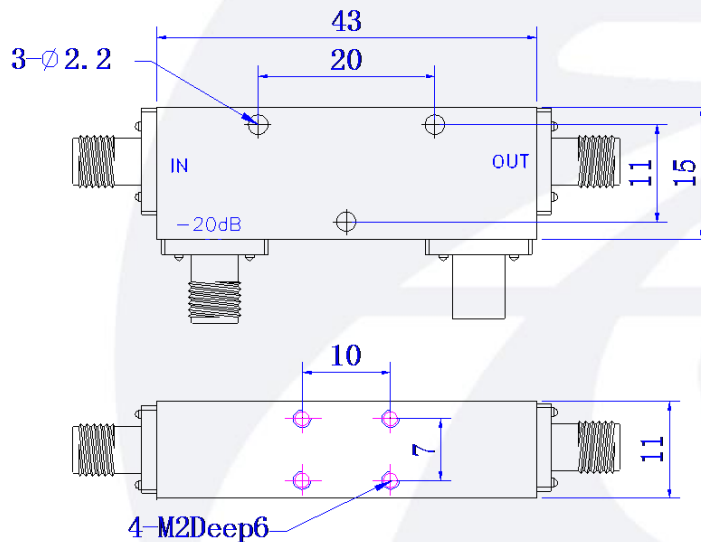


机械特性 Mechanical:

温度范围 Temperature Range: $-40^{\circ}\text{C} - +80^{\circ}\text{C}$
 接口 Connectors: SMA-Female
 相对湿度 Relative Humidity: 0 ~ 90%

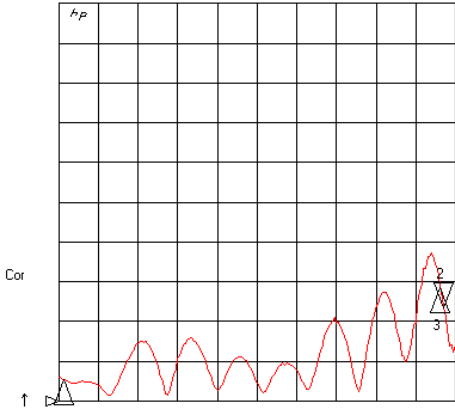
外形尺寸 Outline Drawing:

Unit: mm



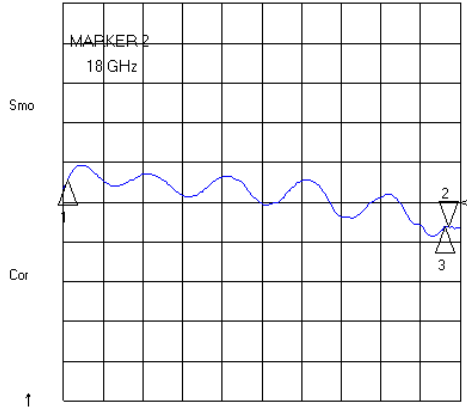
8 Mar 2020 08:51:10

CH1 SWR 100 m / REF 1
S11 2 : 1. 2367 18 . 000 000 000 GHz



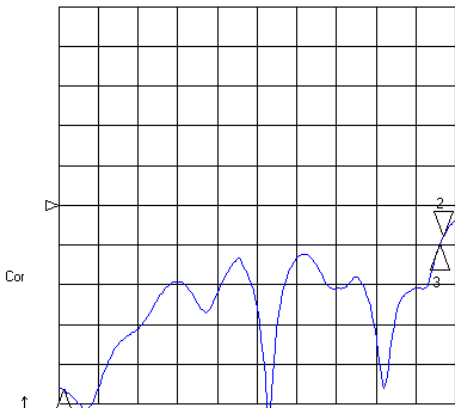
CH1 Markers
1 : 1. 0548
2 : 0.0000 GHz
3 : 1. 2873
17 . 8587 GHz

CH2 LOG 1 dB / REF -20 dB
S21 2 : -20 . 619 dB 18 . 000 000 000 GHz



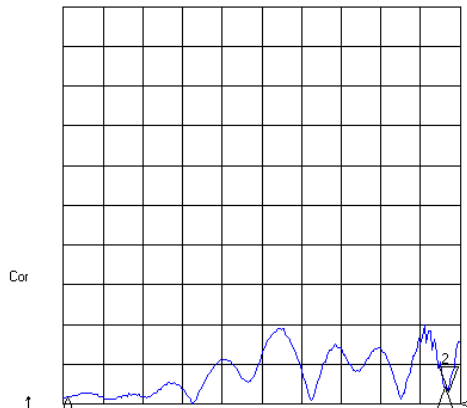
CH2 Markers
1 : -19 . 415 dB
2 : 0.0000 GHz
3 : -20 . 618 dB
17 . 8587 GHz

CH3 LOG 5 dB / REF -32 dB
MEM 2 : -35 . 919 dB 18 . 000 000 000 GHz



CH3 Markers
1 : -55 . 154 dB
2 : 0.0000 GHz
3 : -36 . 867 dB
17 . 8587 GHz

CH4 SWR 100 m / REF 1
S22 2 : 1. 0310 18 . 000 000 000 GHz



CH4 Markers
1 : 1. 0192
2 : 0.0000 GHz
3 : 1. 0426
17 . 8587 GHz

START 1 1800 . 000 MHz STOP 18500 . 000 MHz
2002-1-1 00:22:53

START 1 1800 . 000 MHz STOP 18500 . 000 MHz